

# Washington State University: Department Of Entomology, Crowder Lab

## Pullman, Washington

### Laura A. Pearson

### Summer 2014

## OVERVIEW:

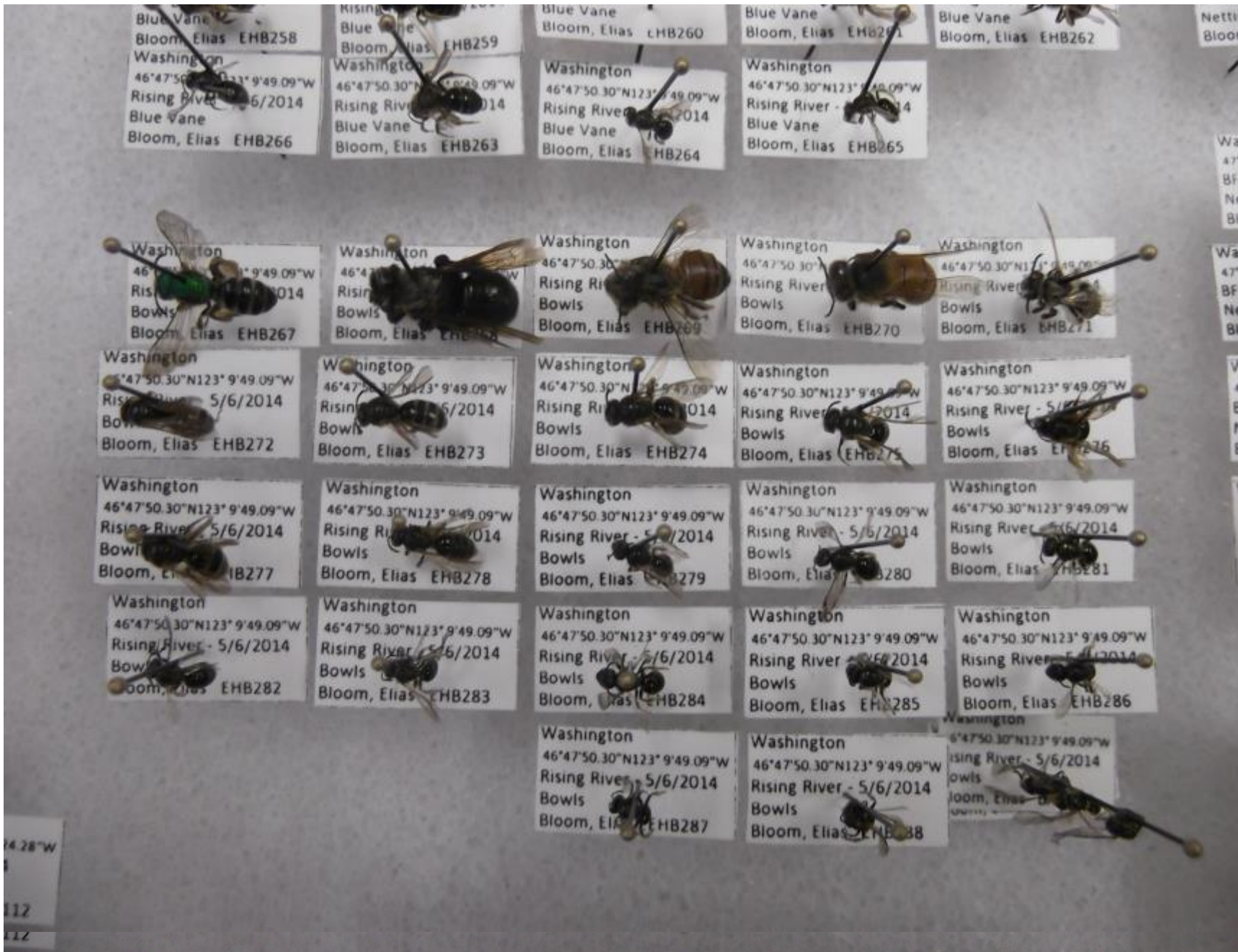
Dave Crowder's lab is one of Washington State University's graduate student research labs. During the summer months, graduate students conduct their research projects on a topic of their choosing. Many of these projects have real-life relevance in the relationship between insects and our country's crops.

## RESPONSIBILITIES:

My responsibilities ranged from working in a lab setting to assisting with experiments in the field or greenhouse..



This is the lab where I would work on processing samples and entering data.



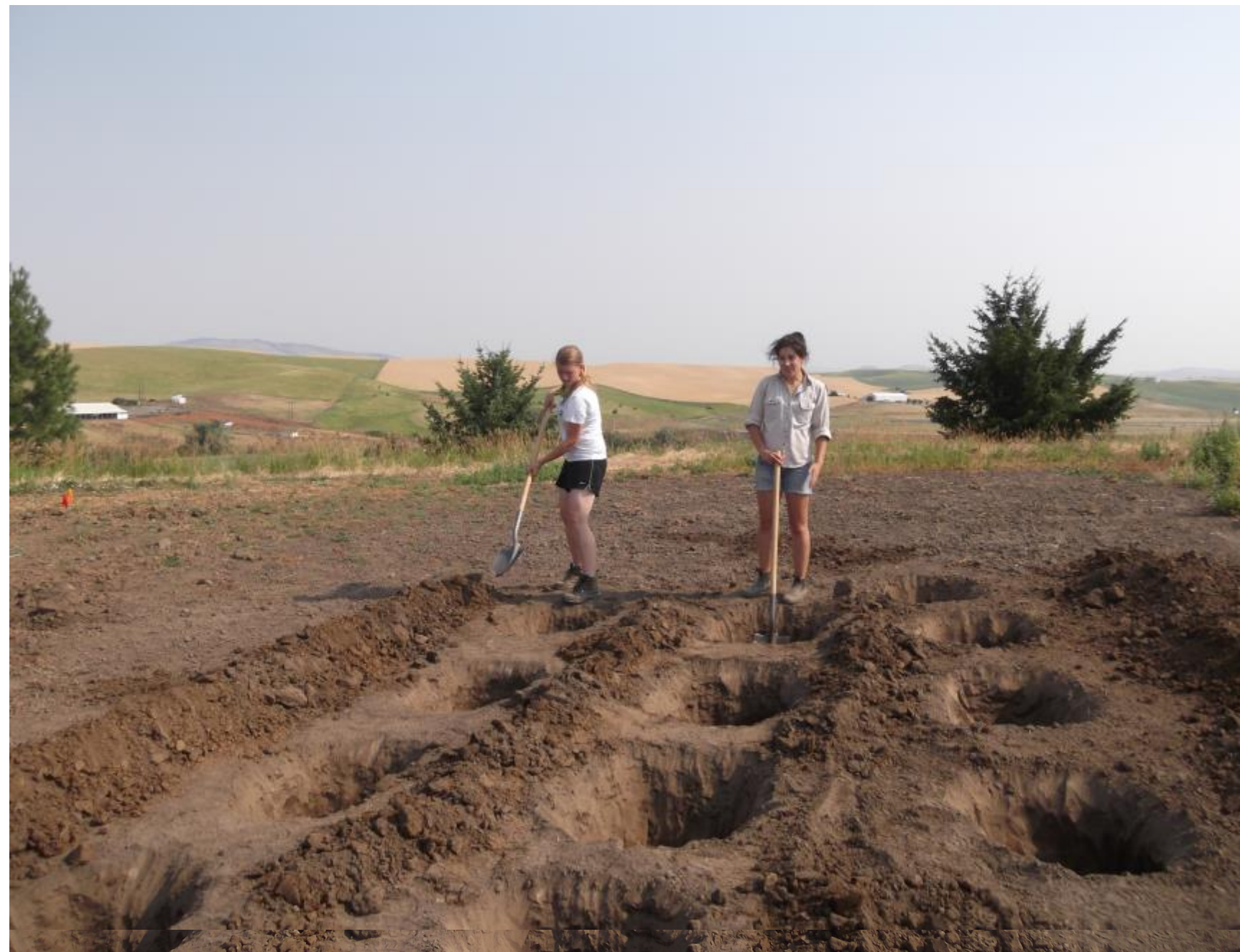
Here is a group of bees that I helped clean and pin to organize the specimens.



This is a picture of me out in a canola field taking nectar samples.



This is a picture of me using a sweep net to collect insects..



Isabel, another intern and I digging holes to set up the plots for a new research experiment out at Tukey.



Here is a set of experimental plots. One was an experiment with wheat and wire worms while the other is an experiment with Colorado potato beetles and potatoes.



A Colorado potato beetle larvae feeding on a potato plant in a bug dorm used to contain research specimens.



The greenhouse plant room where all plants are grown to be used in research projects.

## SUMMARY:

This experience has given me much to reflect when it comes to my professional growth by giving me insight into different career choices. Although I am planning on entering a more horticultural vocation I have benefitted from seeing how horticulture can be incorporated into other vocations. I gained research experience and skills in communicating. Because I still haven't figured out the exact career I want to enter it has been eye opening to see what options are still out there.