

GS Long, Yakima WA

Francisco J Sarmiento

Summer 2017

G.S. Long Co. provides consultations and works closely with growers providing a variety of resources to help grow top quality fruit. Resources include Map design, Spray Recommendations, Chemical Delivery, and Soil/Plant Nutrition.



Fig. 4: Example of a trap that is checked daily

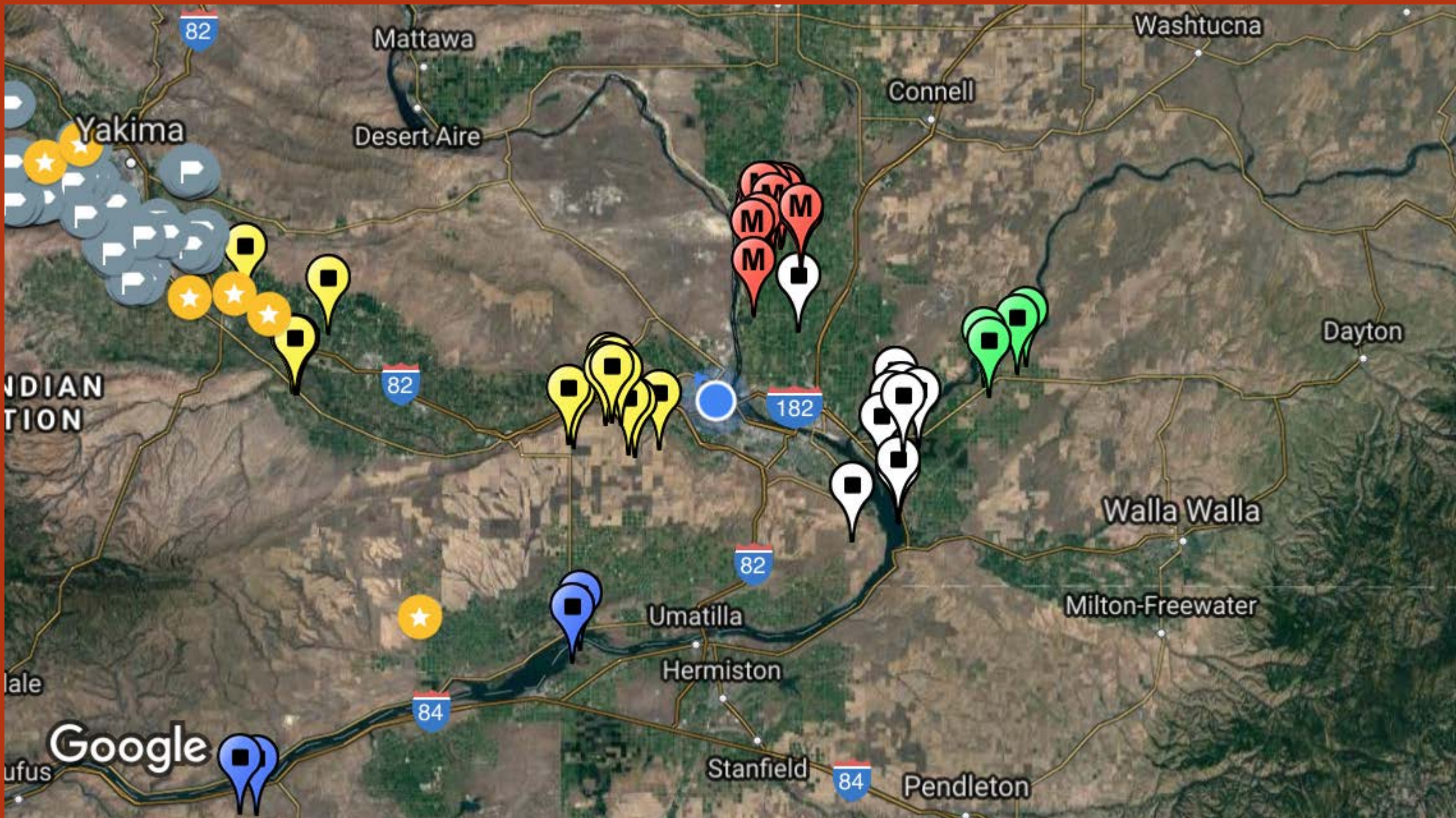


Fig.6: Map of route.
Red-Monday
Blue- Tuesday
Green- Wednesday
Yellow- Thursday
White- Friday



Fig. 7: Example of what one type of mapping option GS Long provides the grower. All the numbers are Trap Locations and some have more than one.

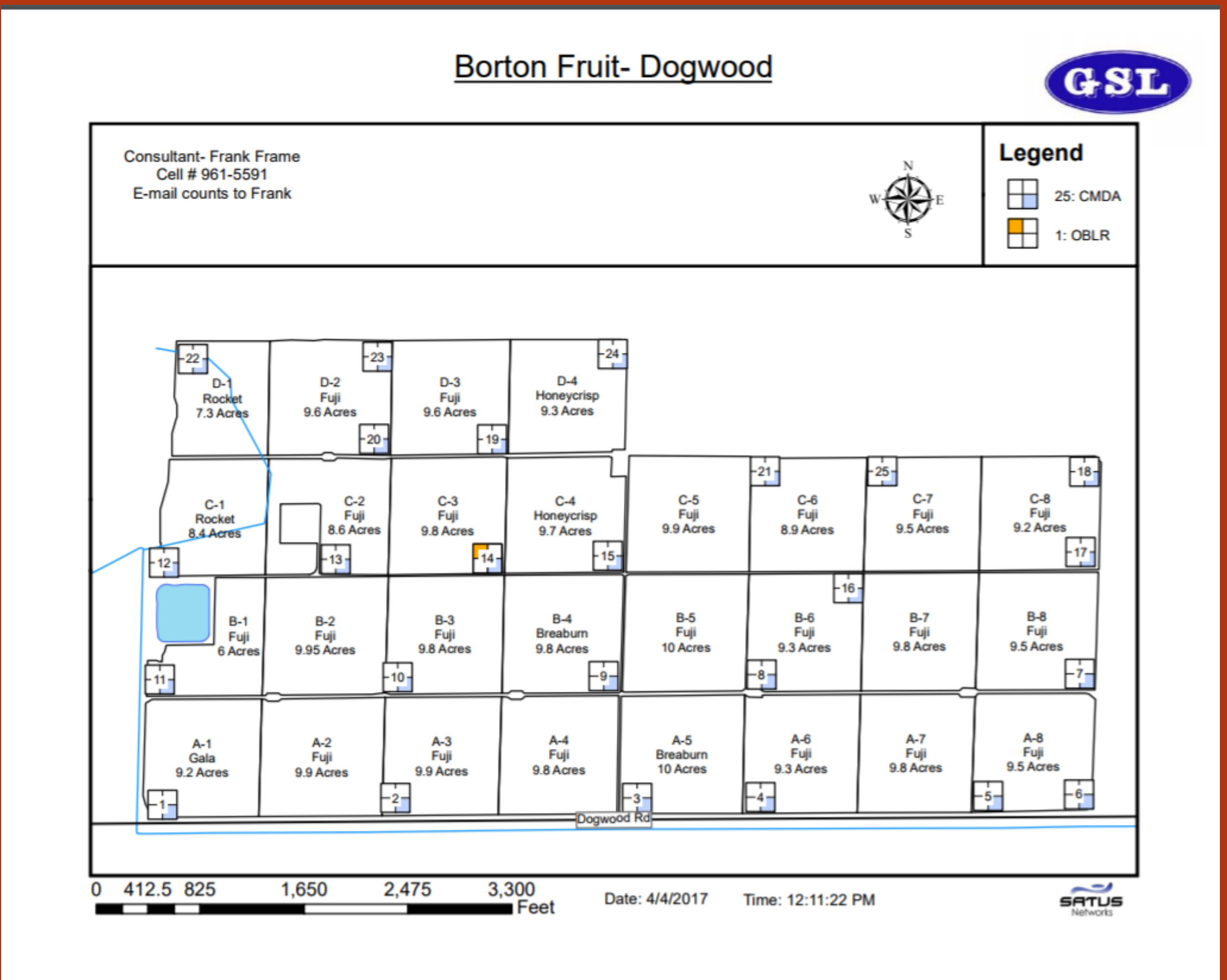


Fig.8: Second option mapping display for the grower. More simplistic but still effective.



Fig. 1: Liner full of Oblique Banded Leaf-Roller



Fig. 2:
Oblique Banded
Leaf-Roller



Fig. 3: Unhealthy
Cherry Tree



Fig.9: Two Codling Moths trapped in the liner



Fig. 5: Codling
Moth Damage

This experience has given me the opportunity to network with company leaders that have been working for many years. It was exciting working with them and seeing how much of an impact they make with the growers. I am also grateful that I could meet growers. One day, it could potentially lead to another internship for the grower specifically. From this summer, I have learned what to look for out in the field but also, meeting people is what opens other possibilities and adventures.